

GS-911

GS-911 Emergency diagnostic tool for BMW motorcycles



All you need is this box, containing the GS-911 diagnostic tool, mini-usb cable and quick-start instructions... Together with the software on your PC/Laptop or mobile phone!

For use on Windows XP/Vista and most mobile phones...

Turn your PC or mobile phone into a powerful fault finding tool

GS-911 is a unique software and hardware combination that allows the BMW Motorcycle enthusiast the ability to communicate with the electronic control modules in a safe and controlled manner. In the true spirit of adventure associated with these motorcycles, this tool is also available with Bluetooth, allowing you to use it with most modern mobile phones... no need for anything else...



Whether you're a techno-geek or an über-adventurer...

Imagine being somewhere in between nowhere and the end of the earth...

Try as you may, it won't start... Sure you can phone someone...

"Just take the 7th turn-off to the left, after the large Baobab tree, past the third river-crossing..." (if you still have reception, you haven't travelled far enough)

Wouldn't it be nice to have an idea of where to start fault finding?

Imagine seeing:

- **Fuse for Fuel-pump, activated**
- **Throttle Position potentiometer**
- **Side-stand Switch malfunction**

Soon you will be able to read & log live data, check whether your sidestand, brake and clutch switches are operational etc... **How cool is that?!**



hexcode

tel.: +27 (0)21 880 1433 info@hexcode.co.za
fax.: 086 614 1109 www.hexcode.co.za

developed and maintained by people passionate about automotive diagnostics

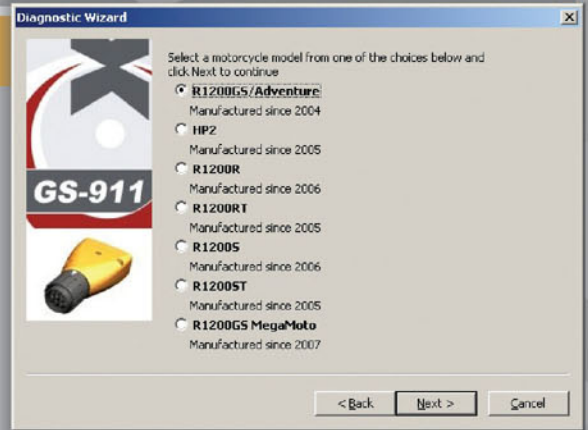
What motorcycles does it work on?

The GS-911 tool is designed specifically with the GS range of motorcycles in mind. This however inherently means that it also works on most other models.

Currently it supports the following:

- R1200 GS / Adv / HP2 / R / RT / S / ST
- R1150** GS / Adv / RT / R / RS
- R1100** S
- K1200 GT / R / S / LT* / GT* / RS*
- F800 S / ST
- F650** GS / Dakar / CS
- G650X Challenge / Country / Moto
- C1

*(non-CAN) / **(single and twin-spark)

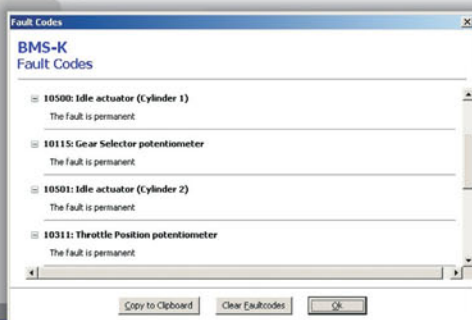


What systems does it work on?

- **Engine Controllers**
For R-Series (1200 and 1150), F-Series (800 and 650), K-Series, G-Series and C-Series
- **ABS**
For R-Series (1200 and 1150), F-Series (800 and 650), K-Series, G-Series and C-Series
- **Central Vehicle Electronics (ZFE)**
For R1200-Series, K-Series and F800-Series
- **Instrument Clusters (Kombi)**
For R1200-Series, K-Series and F800-Series

What does it do?

- **Reads Diagnostic Trouble codes**
Shows Fault codes and text descriptions of the faults stored on the Electronic Control Unit under test.
- **Shows ECU information**
See hardware and Software versions, manufacturing dates and other manufacturer related data
- **Clears Diagnostic Trouble Codes**
Enables you to erase trouble codes once the problem has been fixed



Detailed Fault Codes decoded

GS-911's extensive database of Fault codes provides helpful descriptions without having to look up the code. The screen to the left shows a typical scan of a R1200GS BMS-K Engine controller that had 10 fault codes. Each fault gives the code as well as a phrase to describe the code.



Detailed ECU Information

To the right is shown the Electronic Control Unit (ECU). Information of a typical R1200GS. This shows part number, Manufacturer related information and Software versions.

